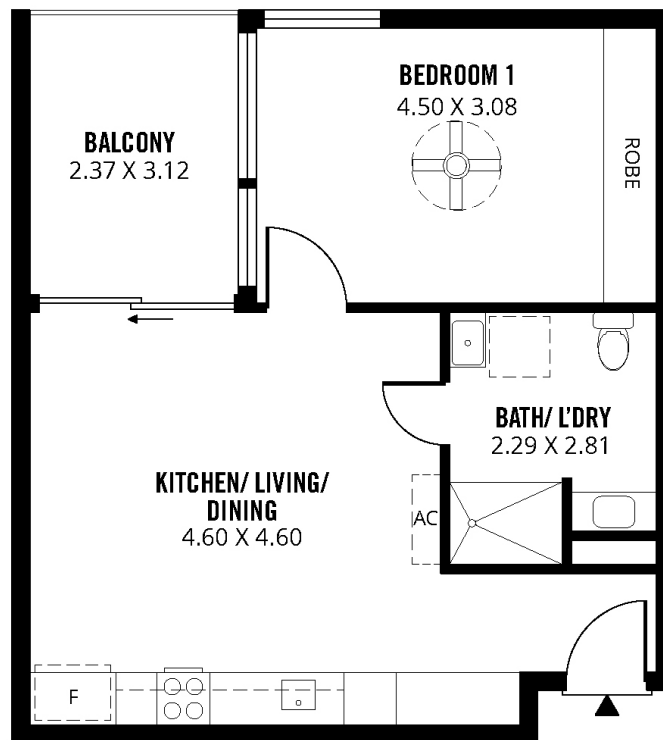


Spence on Light

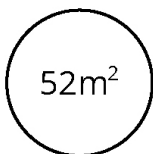
Floor Plan

Design A

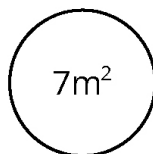
Apartments 1101, 1102, 1201 and 1301



TOTAL



Living



Balcony

While every endeavour has been made to verify the accuracy of the details herein, no liability is accepted for any errors or omissions. Interested parties should make their own independent enquiries. Images and drawings are for illustration purposes and are intended as a guide only. All measurements are approximate and details intended to be relied upon should be independently verified.

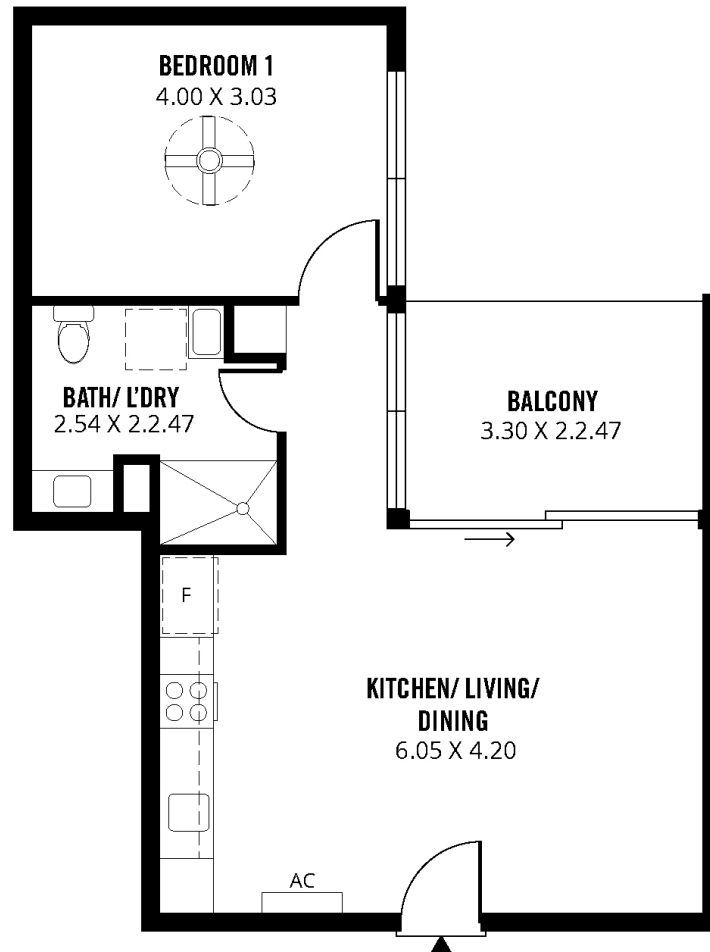
For a smart move in retirement living, talk with
Denise Smith on **0428 540 999** or email **dsmith@ach.org.au**
achgroup.org.au/retirement-living

Spence on Light

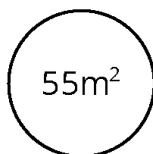
Floor Plan

Design B

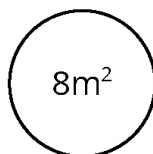
Apartments 1103 and 1104



TOTAL



Living



Balcony

While every endeavour has been made to verify the accuracy of the details herein, no liability is accepted for any errors or omissions. Interested parties should make their own independent enquiries. Images and drawings are for illustration purposes and are intended as a guide only. All measurements are approximate and details intended to be relied upon should be independently verified.

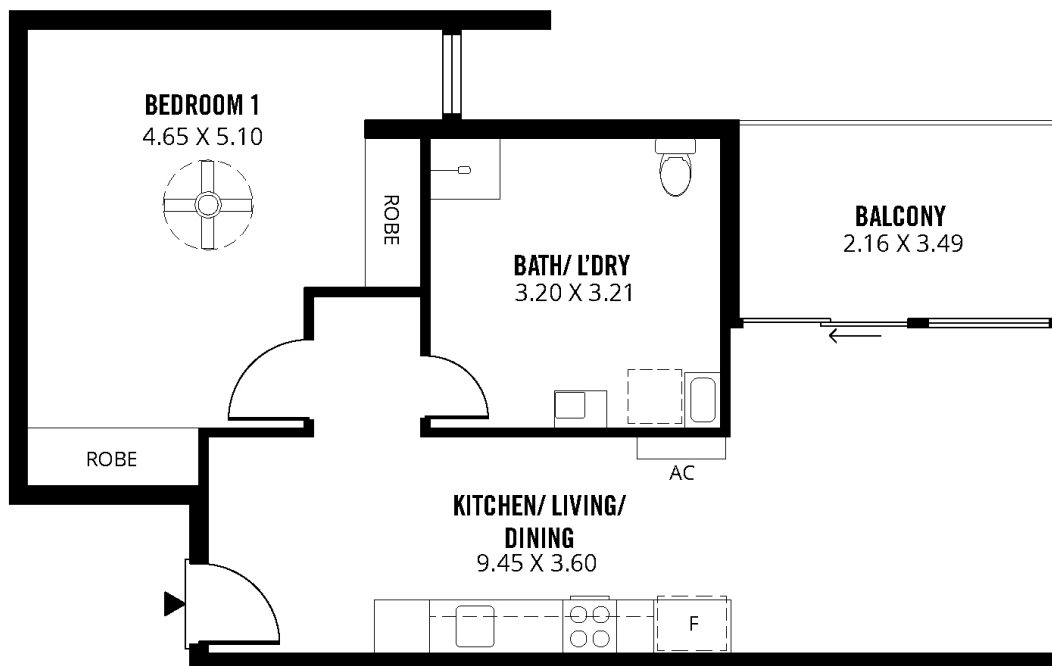
For a smart move in retirement living, talk with
Denise Smith on **0428 540 999** or email **dsmith@ach.org.au**
achgroup.org.au/retirement-living

Spence on Light

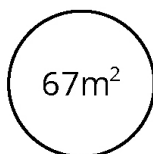
Floor Plan

Design E

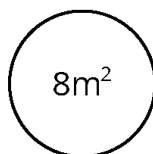
Apartments 1105, 1106, 1204, 1205, 1304 and 1305



TOTAL



Living



Balcony

While every endeavour has been made to verify the accuracy of the details herein, no liability is accepted for any errors or omissions. Interested parties should make their own independent enquiries. Images and drawings are for illustration purposes and are intended as a guide only. All measurements are approximate and details intended to be relied upon should be independently verified.

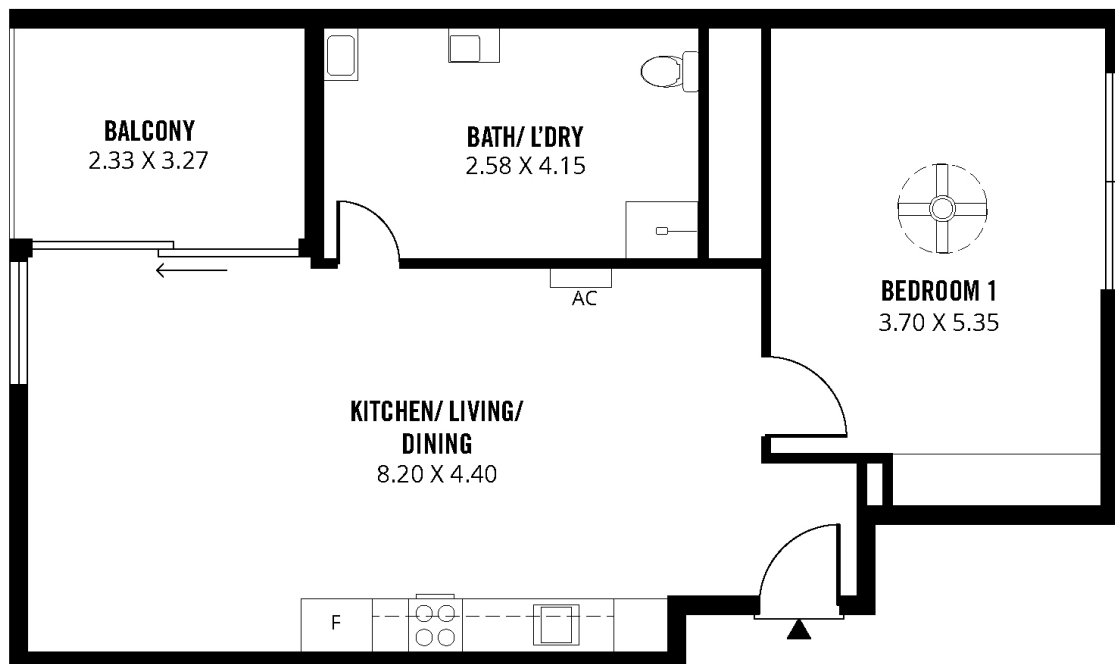
For a smart move in retirement living, talk with
Denise Smith on **0428 540 999** or email **dsmith@ach.org.au**
achgroup.org.au/retirement-living

Spence on Light

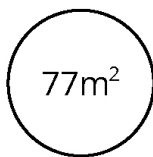
Floor Plan

Design F

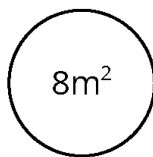
Apartments 1202 and 1302



TOTAL



Living



Balcony

While every endeavour has been made to verify the accuracy of the details herein, no liability is accepted for any errors or omissions. Interested parties should make their own independent enquiries. Images and drawings are for illustration purposes and are intended as a guide only. All measurements are approximate and details intended to be relied upon should be independently verified.

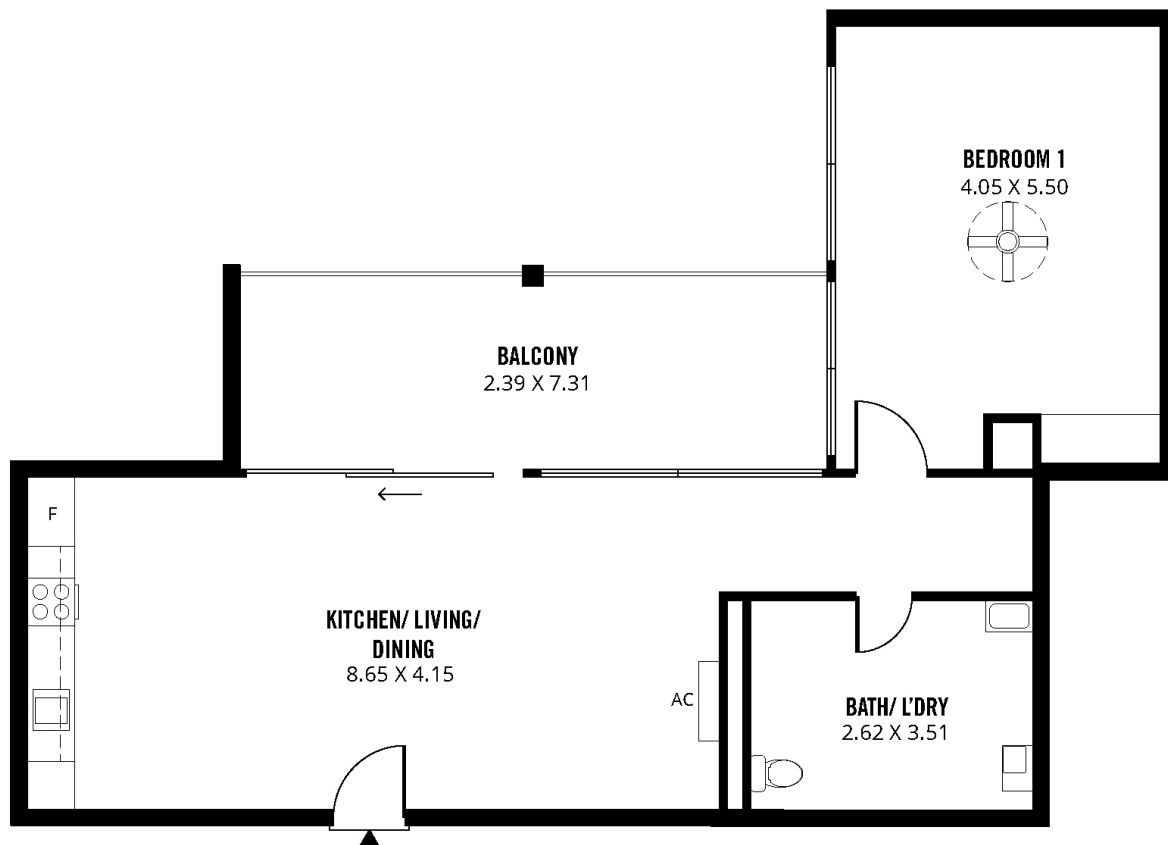
For a smart move in retirement living, talk with
Denise Smith on **0428 540 999** or email **dsmith@ach.org.au**
achgroup.org.au/retirement-living

Spence on Light

Floor Plan

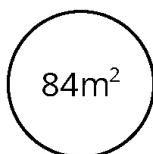
Design G

Apartments 1203 and 1303



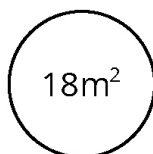
102m²

TOTAL



84m²

Living



18m²

Balcony

While every endeavour has been made to verify the accuracy of the details herein, no liability is accepted for any errors or omissions. Interested parties should make their own independent enquiries. Images and drawings are for illustration purposes and are intended as a guide only. All measurements are approximate and details intended to be relied upon should be independently verified.

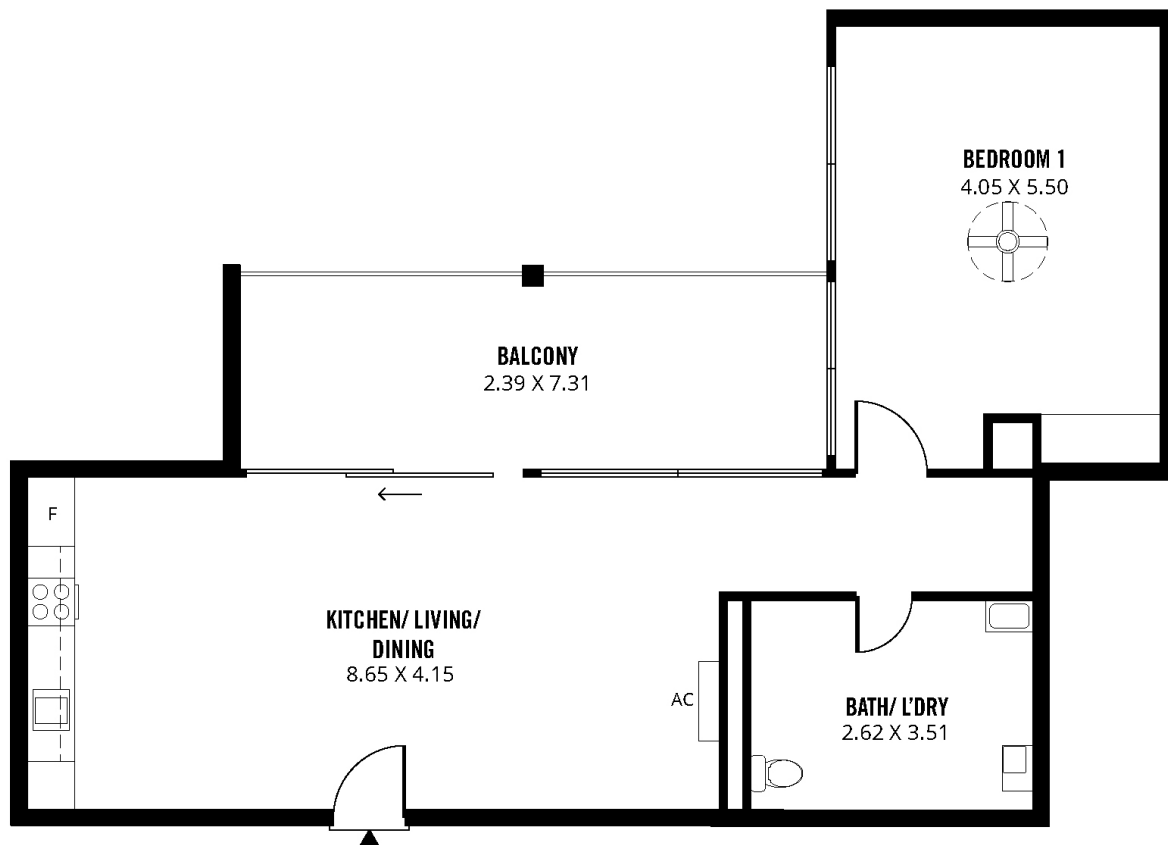
For a smart move in retirement living, talk with
Denise Smith on **0428 540 999** or email **dsmith@ach.org.au**
achgroup.org.au/retirement-living

Spence on Light

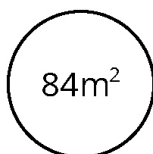
Floor Plan

Ground Level

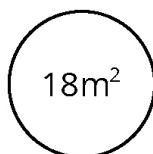
Community facilities



TOTAL



Living



Balcony

While every endeavour has been made to verify the accuracy of the details herein, no liability is accepted for any errors or omissions. Interested parties should make their own independent enquiries. Images and drawings are for illustration purposes and are intended as a guide only. All measurements are approximate and details intended to be relied upon should be independently verified.

For a smart move in retirement living, talk with
Denise Smith on **0428 540 999** or email **dsmith@ach.org.au**
achgroup.org.au/retirement-living